

**SOLUTIONS ELEMENTARY 2**  
**UNIT 4: FOOD**  
**MOVIE**

PEGAH BAHOJB GHASEMI



**WHERE CAN YOU  
GET THE FOOD?**

# WHERE CAN YOU GET THE FOOD?

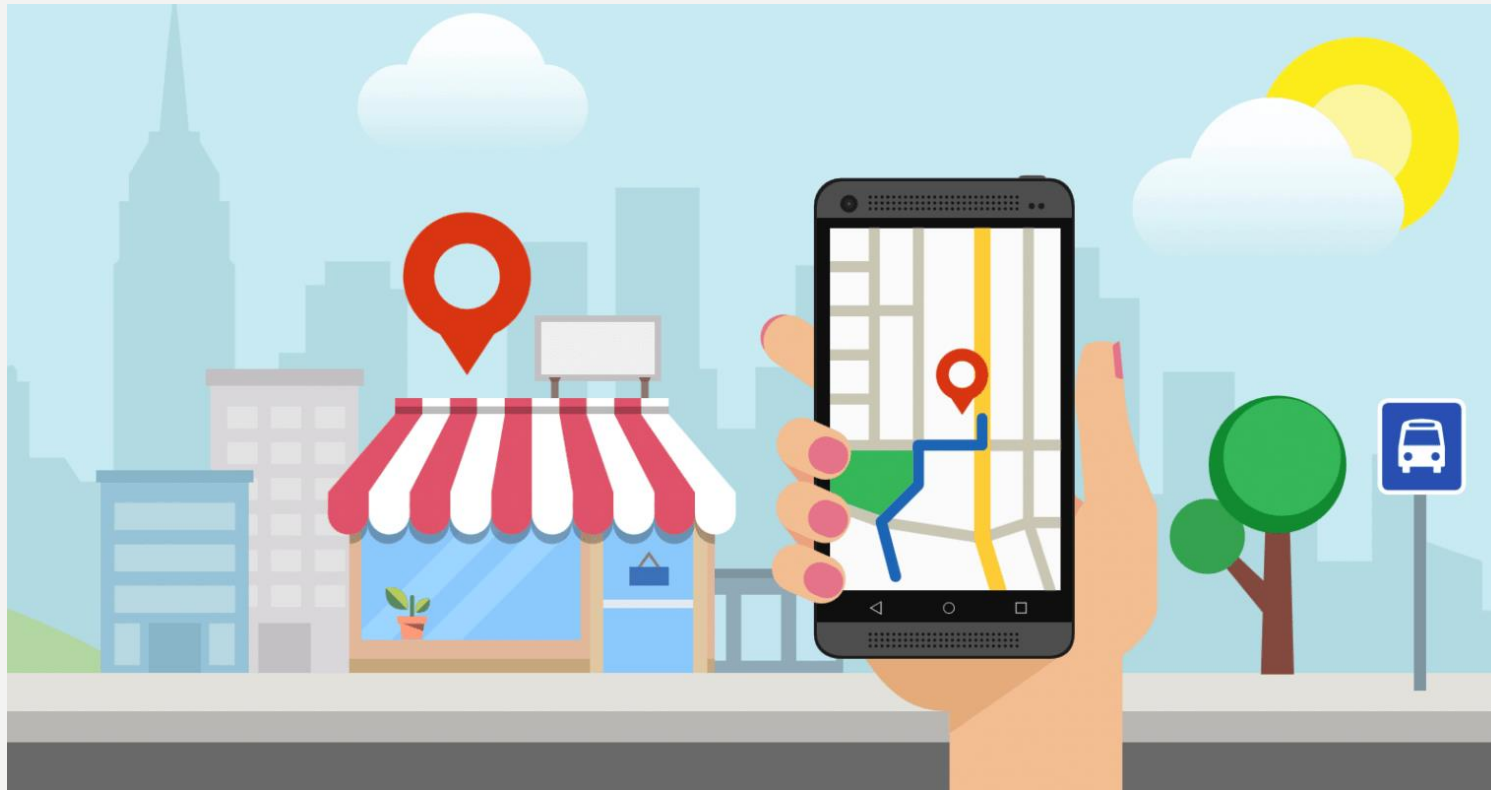




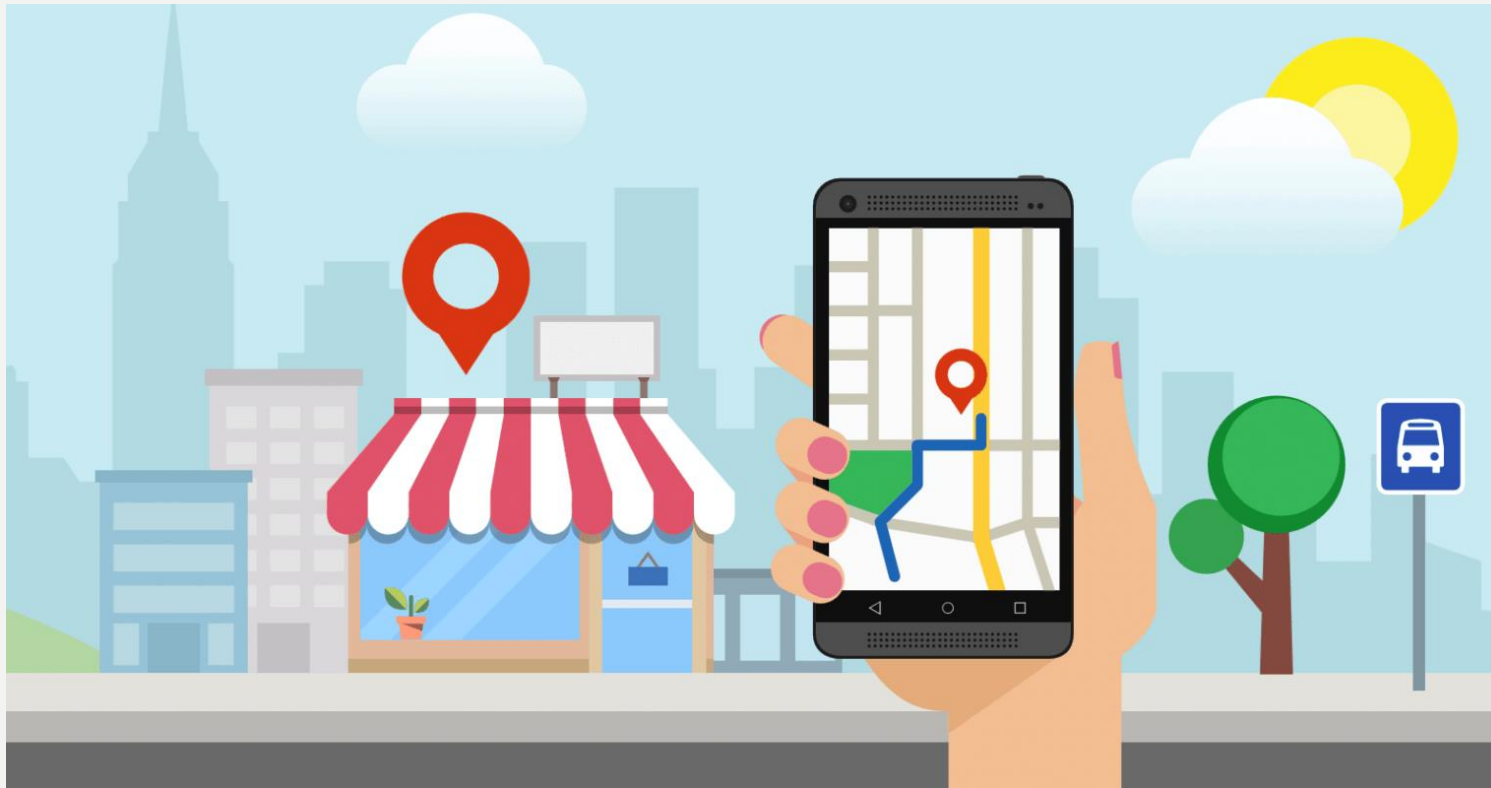
# FARMER MARKET



**RELATING OR RESTRICTED TO A PARTICULAR AREA OR ONE'S NEIGHBOURHOOD.**



**RELATING OR RESTRICTED TO A PARTICULAR AREA OR ONE'S NEIGHBOURHOOD.**



Local  
area

# WHO MAKES AND RELEASES FOOD?





# WHO MAKES AND RELEASES FOOD?



Food  
producer





# WAREHOUSE

A large building where raw materials or manufactured goods may be stored prior to their distribution for sale.





# CHEESE CURDS


A soft, white substance formed when milk coagulates, used as the basis for cheese.




## Before you watch

- 1** **SPEAKING** Work in pairs. Answer the questions.
  - 1 Where does your family buy the food you eat?
  - 2 Do you know where the food comes from?
  - 3 What's your favourite food in the summer and winter?

## Comprehension check

- 2**  Watch the DVD clip. Choose the correct answers.
- 1 Where is the food at the farmers' market from?  
a other countries      b Britain and other countries      c Britain
  - 2 Which sentence is true about the food at the farmers' market?  
a It is usually expensive.  
b It doesn't travel very far to get here.  
c It is often quite old.
  - 3 What do they produce at Lyburn Farm?  
a bread      b cheese      c beef



**3**  Watch again. Tick the foods that you see.

**a** eggs

**b** beef

**c** cheese

**d** apples

**e** chicken

**f** fish

**g** carrots


**h** sausages

**i** bread

**j** tomatoes

**k** olives

**l** strawberries

**4**  **Watch again. Complete the sentences with one word in each gap.**

- 1 There isn't any food at the market from other \_\_\_\_\_.
- 2 You can buy meat and \_\_\_\_\_ from local farmers at the market.
- 3 The local bakers sell bread and \_\_\_\_\_.
- 4 Food in shops and \_\_\_\_\_ often travels a long way.
- 5 At the farmers' market, the people who \_\_\_\_\_ the food also sell it.
- 6 The Lyburn family sell their products at local \_\_\_\_\_.
- 7 Every morning they collect the \_\_\_\_\_ from the cows.
- 8 It takes three \_\_\_\_\_ for the cheese to be ready.

## Round up

5 **SPEAKING** Work in groups. Answer the questions.

Would you like to go shopping at a farmers' market? What would you like to buy there?





# VEGETABLES





FRUIT







# GRAINS





MEAT





DAIRY

## Vocabulary

6 **RECYCLE** Put the food words below in the correct category.

beef bread carrots cheese sausages tomatoes

Fruit and vegetables	Meat	Other foods
<hr/> <hr/>	<hr/> <hr/>	<hr/> <hr/>

**7** Complete the sentences with the words below.

family-run farmer jam producer warehouse

- 1 The \_\_\_\_\_ grows the fruit and vegetables in fields.
- 2 Every summer, we make \_\_\_\_\_ with strawberries and sugar. It's great on toast.
- 3 The \_\_\_\_\_ uses some of the fruit to make juice.
- 4 Before the food goes to a supermarket, it stays in a large \_\_\_\_\_ .
- 5 It's a \_\_\_\_\_ shop. My parents, brother and sister all work here.

## Extension

- 8** Work in groups. You are organising a local farmers' market in your town. Write a radio advert to invite people to the market. Think about the following:
- where and when it takes place
  - who will be there and what they will sell
  - why people should come to the market
- 9** Present your advert to the class. Use the key phrases for invitations.

### Invitations

We're holding a farmers' market on ...

It starts at ...

Put it in your diary.

Hope you can make it.



**DON'T FORGET  
YOUR FINAL EXAM!**