


SOLUTIONS
ELEMENTARY 3
UNIT 6: ANIMALS
6F

pegah bahojb ghasemi







**ARE THESE ANIMALS REAL?
DO YOU KNOW ANY FILMS OR
STORIES WITH DRAGONS OR
UNICORNS IN THEM?**

- 1 **SPEAKING** In pairs, read the paragraph. Then answer the questions below.

Hundreds of years ago, travellers shared stories about strange animals from other parts of the world. But in most people's opinion, these stories were just myths: the animals were not real. However, in a few cases, they were wrong – the animals were real. And hundreds of years later, people proved it!

- 1 What is a 'myth'?
- 2 What were people wrong about?

Myth







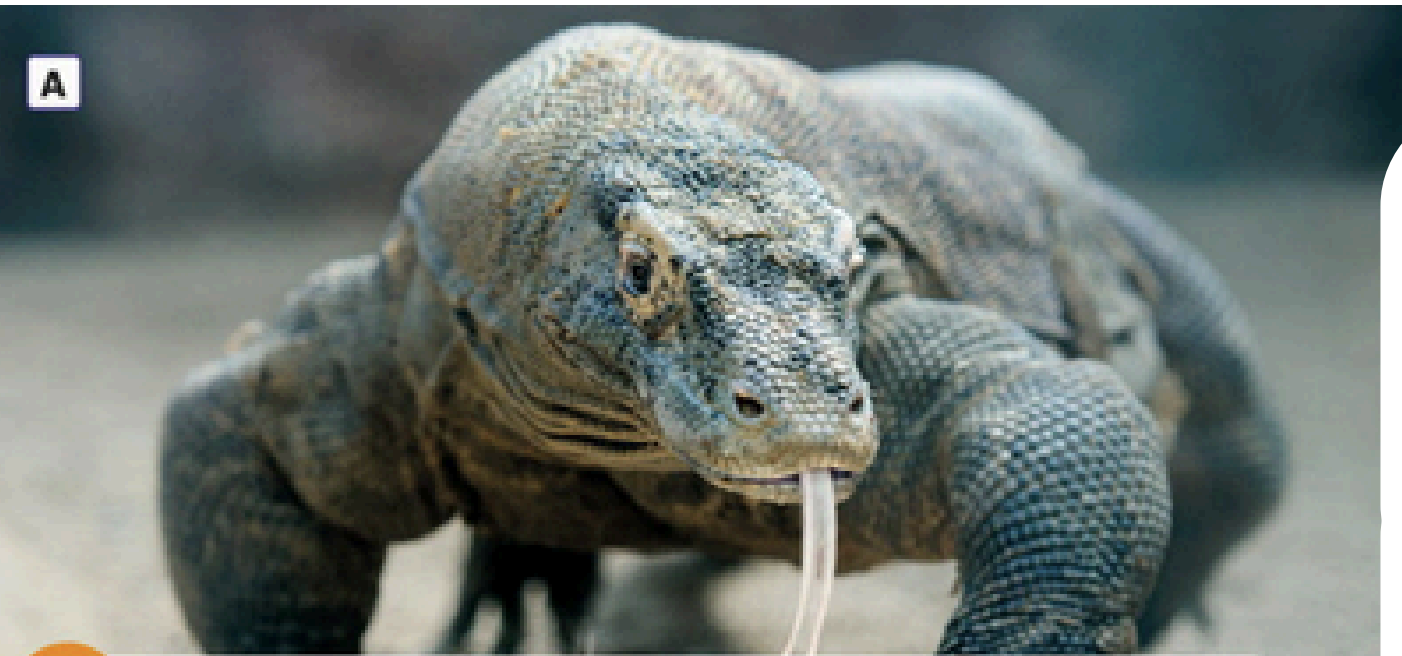


3.13

REAL ANIMALS

THAT WERE ONCE A MYTH

2 Look at the headings (1–4) in the text and match them with the photos (A–D).



A

1 Giant squid

In Ancient Greek times, there were stories about huge sea monsters with very long arms. Similar stories appeared in the Middle Ages. These monsters lived in very deep water, but sometimes they attacked **sailors**. However, were these creatures real or were they a myth? For hundreds of years, **scientists** were not sure. But that changed in 1873. A giant squid attacked a small boat near the east coast of North America. The **fishermen** in the boat used an axe to cut off two of the giant squid's arms. They were six metres long! They showed the arms to the scientists at a local museum. The scientists were amazed! Today, everyone knows that giant squid are real, but people very rarely see them. In fact, only one video exists of a giant squid in its natural habitat.



B

2 Gorillas

About 2,500 years ago, an Ancient Greek **explorer** called Hanno travelled to Africa. On one island near the coast, there was a group of strange people with black hair on their faces and bodies. He asked the local people for information about them: they were 'gorillae', they answered. These 'people' were violent, bad-tempered and very strong. And for hundreds of years, there were similar stories about strange creatures – half human and half animal – in the forests of Africa. The first scientific description of gorillas only appeared in the 19th century. And mountain gorillas were a complete mystery until a German **soldier** discovered them in 1902!

2 Look at the headings (1–4) in the text and match them with the photos (A–D).



3 Okapi

The Ancient Egyptians were familiar with the okapi, a strange creature from the forests of Africa. It looked like a mix between a zebra and a horse. In the 19th century, the famous British **journalist** and explorer Henry Stanley described the same animal. But was it all a myth? An English **politician** in central Africa, Henry Johnston, was very interested in Stanley's description. He decided to find the animal. It was not easy, but in 1901 Johnston finally managed to get a complete okapi skin. He sent it to London and the scientists there were amazed. Later, they realised that the okapi is not a type of zebra – in fact, it is a relative of the giraffe.

4 Komodo dragons

During the First World War (1914–18) a **pilot** crashed into the sea near Indonesia. Luckily, he could swim well. He reached one of the smaller islands. He was safe! Or was he? On the island, he discovered a horrible monster. It looked like a dragon: it was very big with short legs and a long tongue. It attacked and killed large animals for food. The pilot survived and later he described the monster to his friends. They laughed at him! But in fact, the animal was real: it was a Komodo dragon, the largest lizard in the world. In 1927, London Zoo opened its new Reptile House and it included the first pair of Komodo dragons in Europe.

D



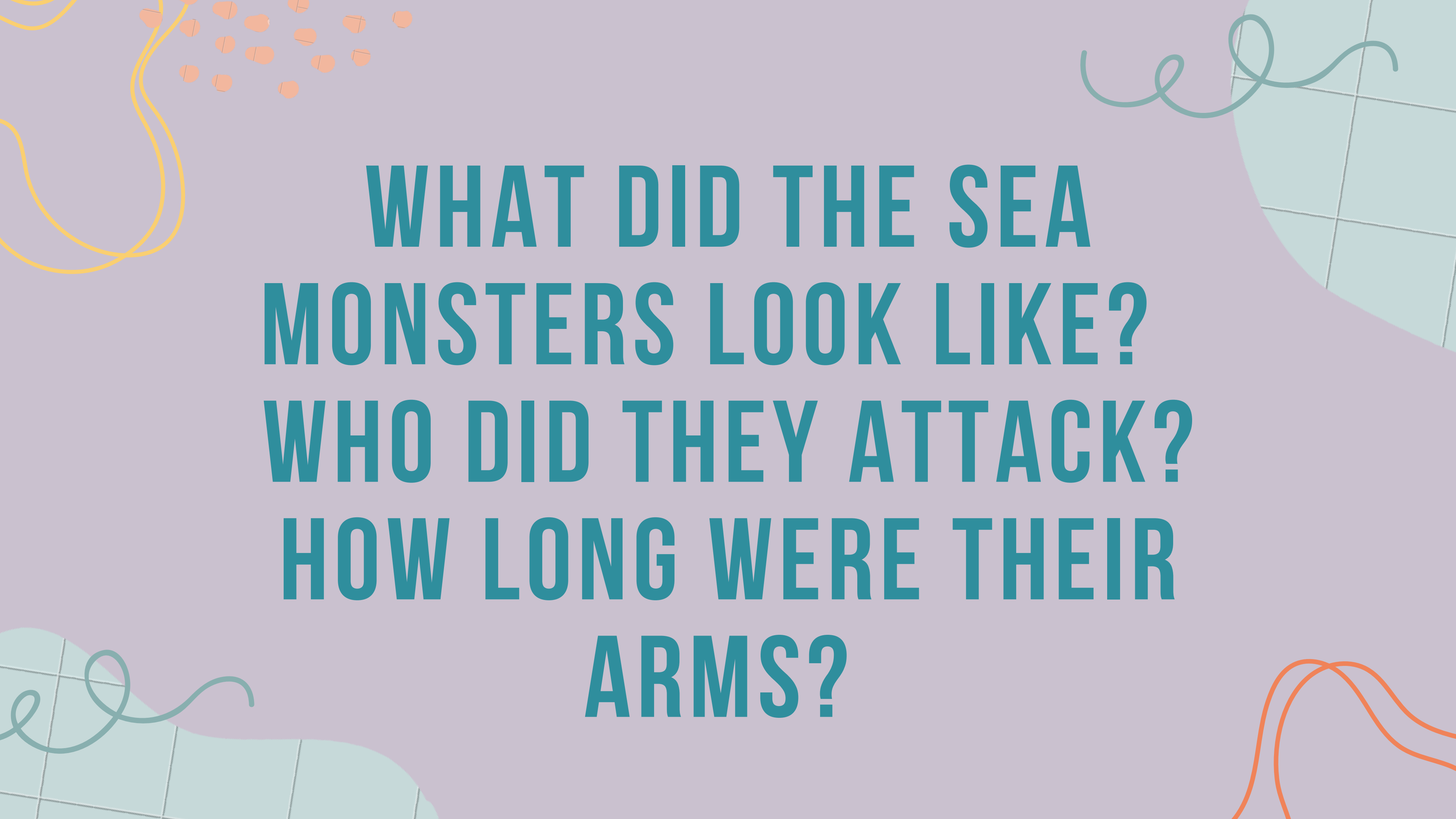
Reading Strategy

When you do a multiple-choice task, treat each option as a true or false task. Remember that only one option – the correct answer – is true.

- 3 Read the **Reading Strategy**. Then read the first section of the text. Decide if these statements are true or false. Write T or F.

The first people to describe a giant squid were

- A the Ancient Greeks. ____
- B sailors in the Middle Ages. ____
- C two fisherman in 1873. ____




**WHAT DID THE SEA
MONSTERS LOOK LIKE?
WHO DID THEY ATTACK?
HOW LONG WERE THEIR
ARMS?**



**WHEN DID HANNO TRAVEL TO
AFRICA?**

**WHERE DID HE FIND SOME
STRANGE PEOPLE?**





**WHEN DID SCIENTISTS DESCRIBE
GORILLAS?**

**WHEN DID PEOPLE FIRST SEE
MOUNTAIN GORILLAS?**

**WHAT ANIMALS DID THE OKAPI
REMINDE PEOPLE OF?**





**WHERE DOES THE KOMODO
DRAGON LIVE?
WHO FIRST SAW IT?
WHAT DID IT EAT?**

4 Read all of the text. Circle the correct answers (a–c).

- 1 People finally realised giant squid were real when
 - a stories from the Middle Ages matched the stories from Ancient Greece.
 - b some fishermen showed the arms of a giant squid to scientists.
 - c somebody filmed a video of one.
- 2 Who first used the word 'gorillae'?
 - a Ancient Greeks
 - b Africans
 - c Germans
- 3 Scientists realised that the okapi were not a myth when
 - a they discovered Ancient Egyptian descriptions.
 - b they studied Henry Stanley's description.
 - c they received an okapi skin from Henry Johnston.
- 4 After a pilot discovered Komodo Dragons during the First World War, he
 - a shared the story with his friends.
 - b informed London Zoo about the animal.
 - c tried to catch one.

5 **VOCABULARY** Match the highlighted professions in the text with the definitions below

1 **scientists**: people who do scientific work.

2 _____: somebody who fights in an army.

3 _____: somebody who writes for newspapers and / or magazines.

4 _____: somebody who goes to new places to discover what they are like.

5 _____: somebody who helps to make a country's laws.

6 _____: people who go out in boats to catch fish.

7 _____: somebody who flies a plane.

8 _____: people who work on a boat.

6 **SPEAKING** In pairs, choose one of the creatures below and describe it to your partner. What does it look like? Is it big or small? Does it live on land or in water?

The Loch Ness Monster



Bigfoot



Giant Anaconda



7 INTERNET RESEARCH Search online to find out more about one of the creatures from exercise 6. Use the questions below to help you. Then share your answers with the class.

- Are there a lot of stories about it or only a few?
- Where does it live, according to the stories?
- Are there any photos or videos of it?
- Does it really exist, in your opinion?