

**SOLUTIONS INTERMEDIATE 5**

**CULTURE 8:**

**HELEN KELLER**

PEGAH BAHOJB GHASEMI



**DO YOU KNOW ANYONE  
WITH A DISABILITY?**

**WHAT MAKES LIFE  
HARDER FOR THEM  
THAN FOR OTHER  
PEOPLE?**

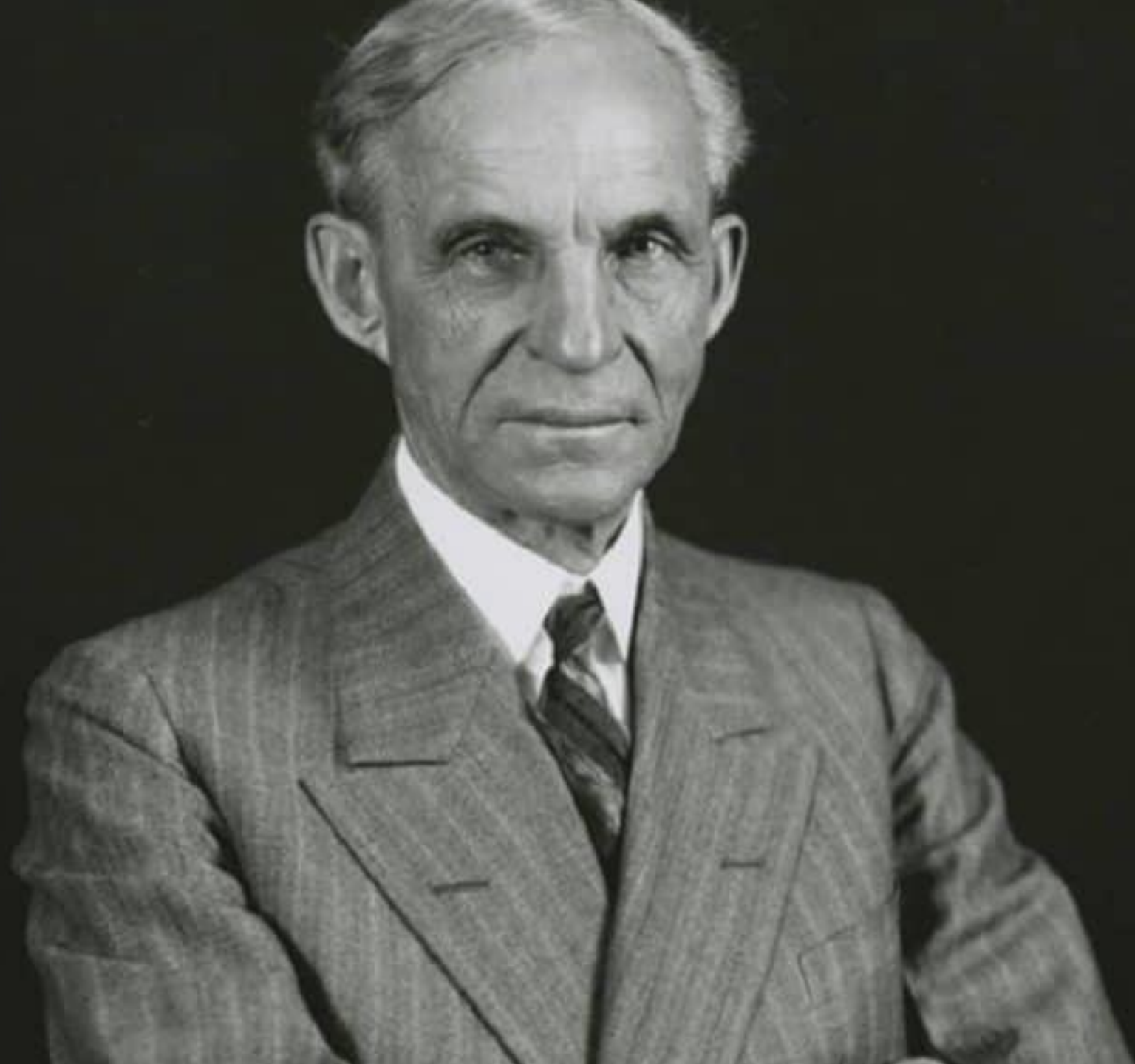


**DO YOU KNOW VERY  
INFLUENTIAL PERSON  
WITH A DISABILITY?**

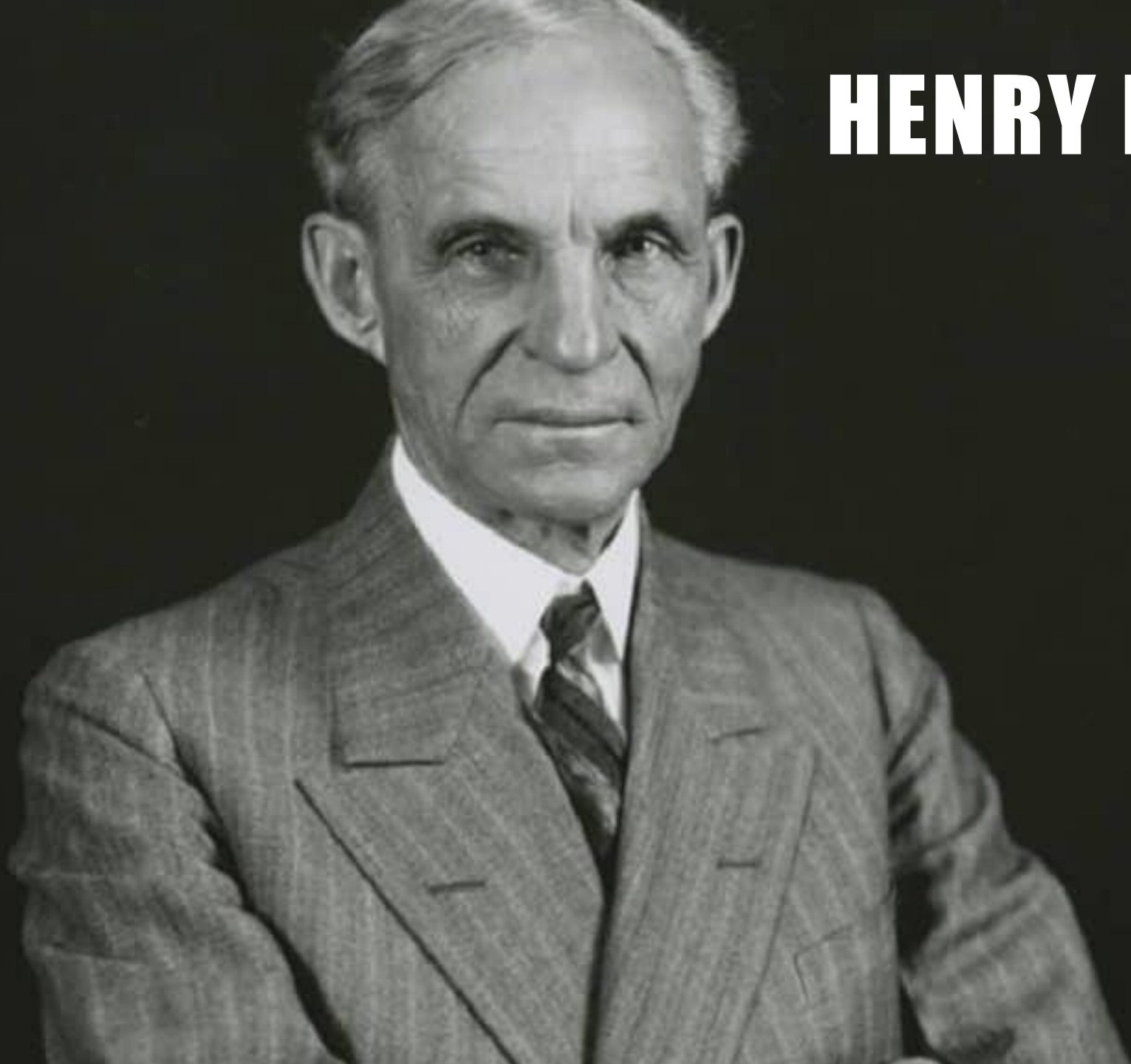


# FRIDA KAHLO







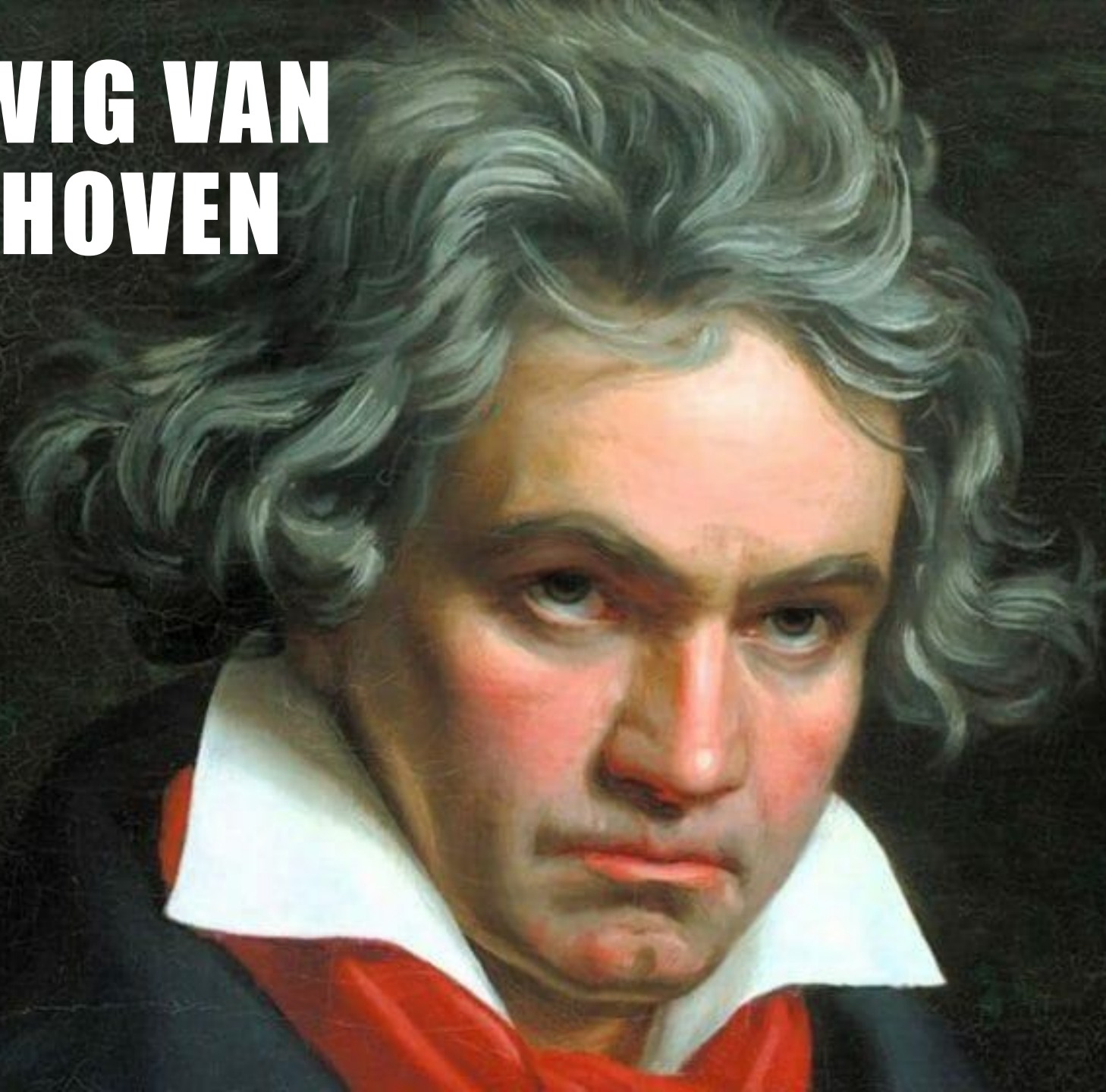


**HENRY FORD**





# LUDWIG VAN BEETHOVEN



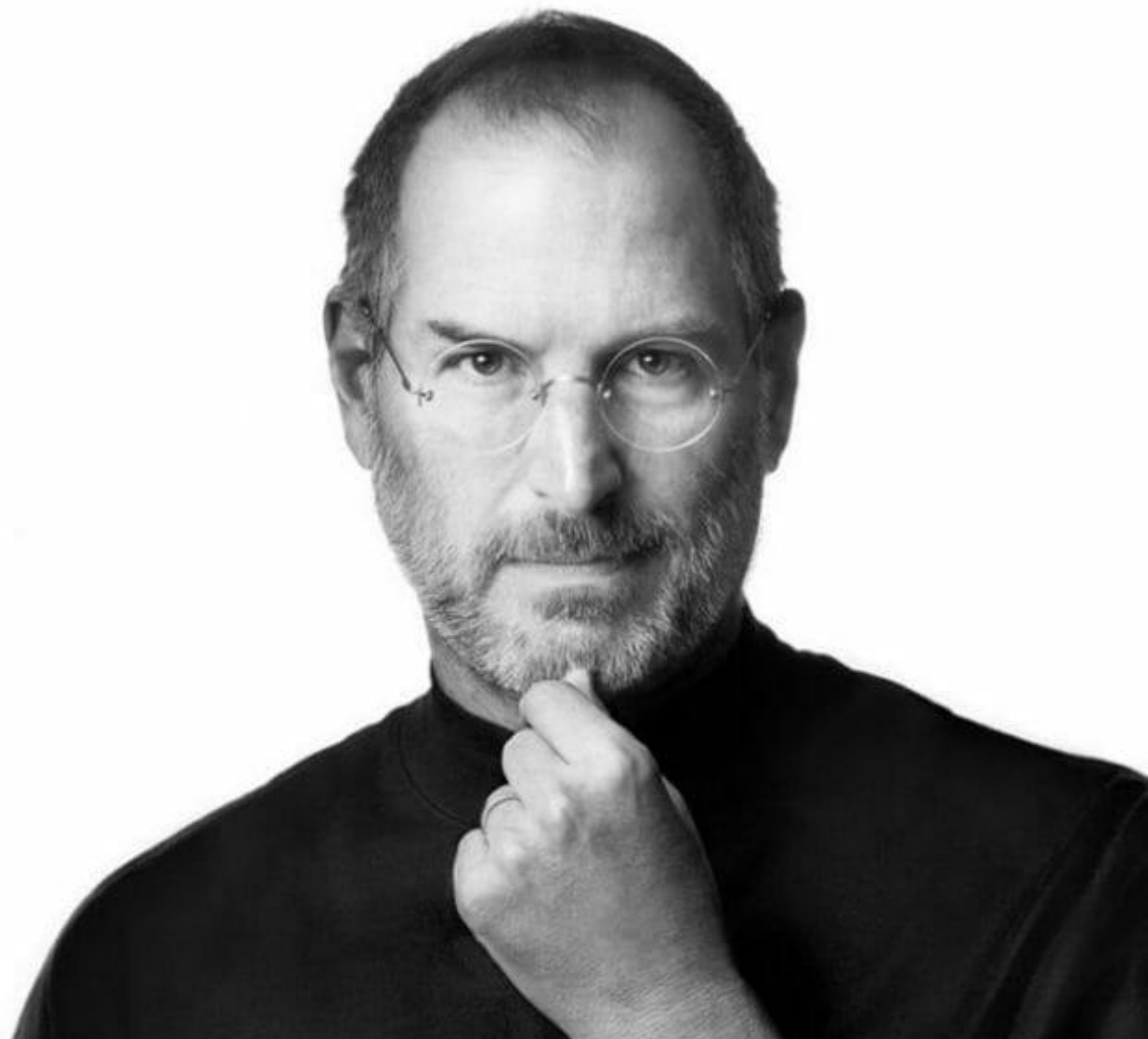






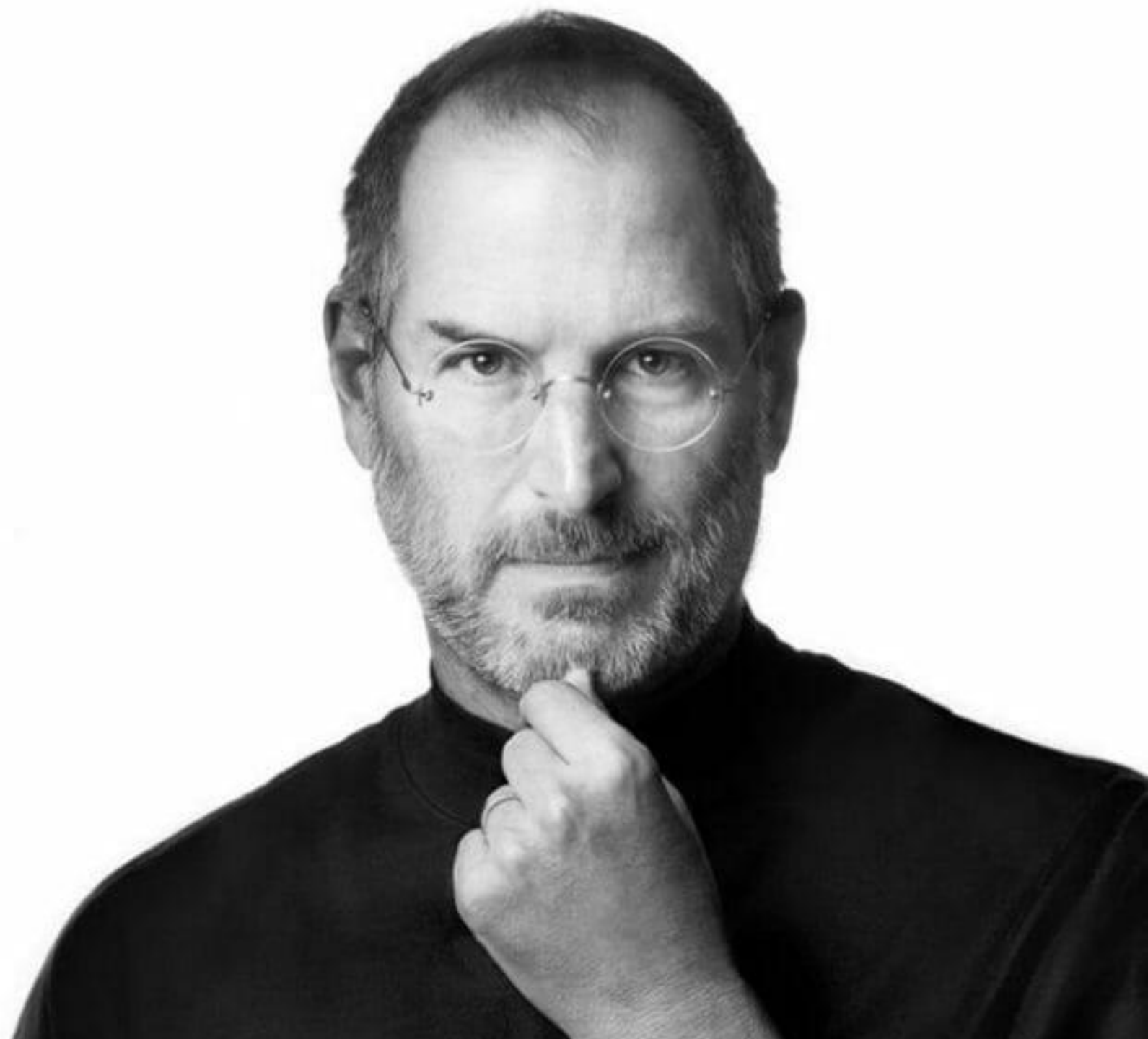
A close-up photograph of Stephen Hawking. He is wearing his signature gold-rimmed glasses and a blue checkered blazer over a white shirt and a patterned tie. He has a wide, joyful smile, showing his teeth. His eyes are looking slightly to the right of the camera. The background is a blurred blue and yellow.

**STEPHEN  
HAWKING**





**STEVE JOBS**





# HELEN KELLER





- 1 **SPEAKING** Work in pairs. Discuss the quotation.  
What was Helen Keller talking about, do you think?  
Do you agree with her?

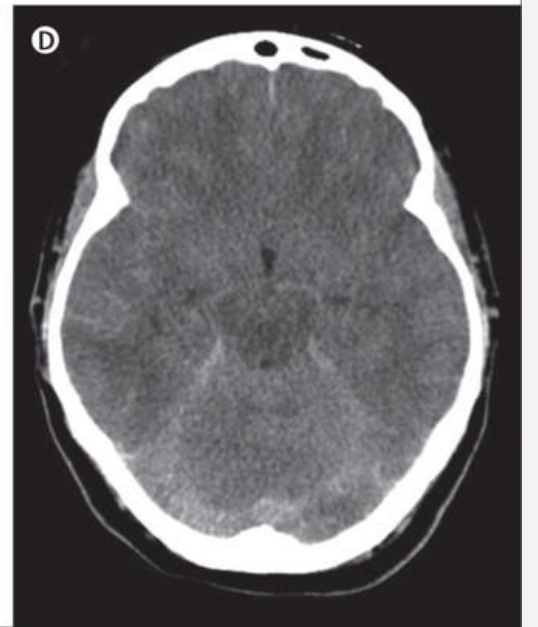
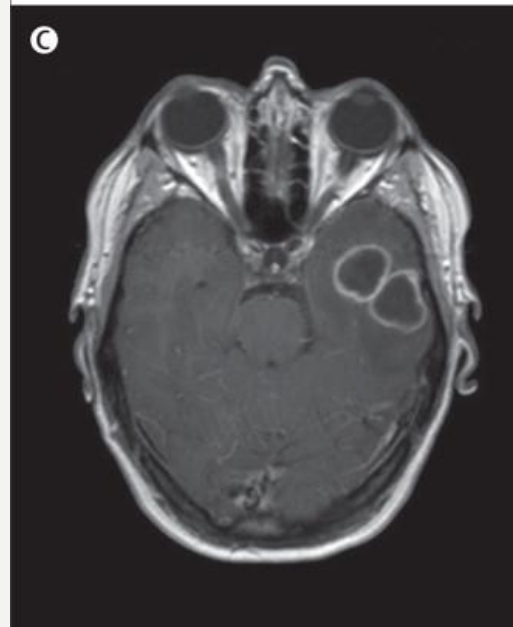
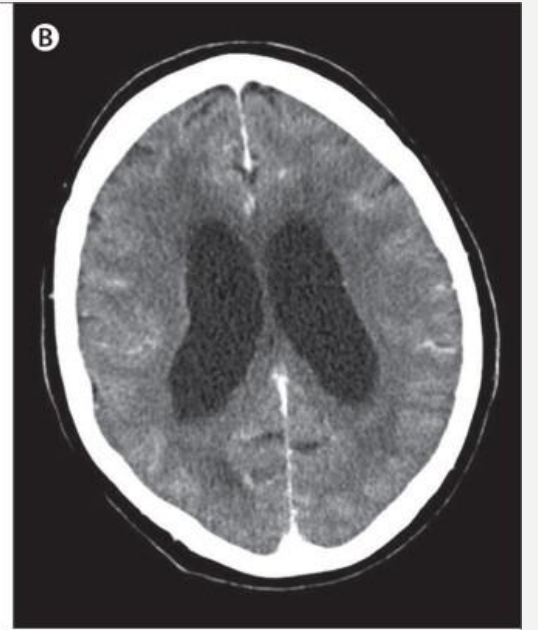
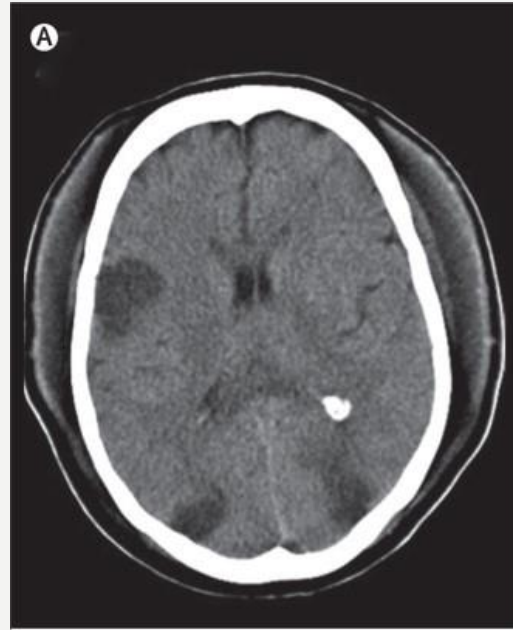
‘The best and most beautiful things in the world cannot be seen or even touched – they must be felt with the heart.’ Helen Keller



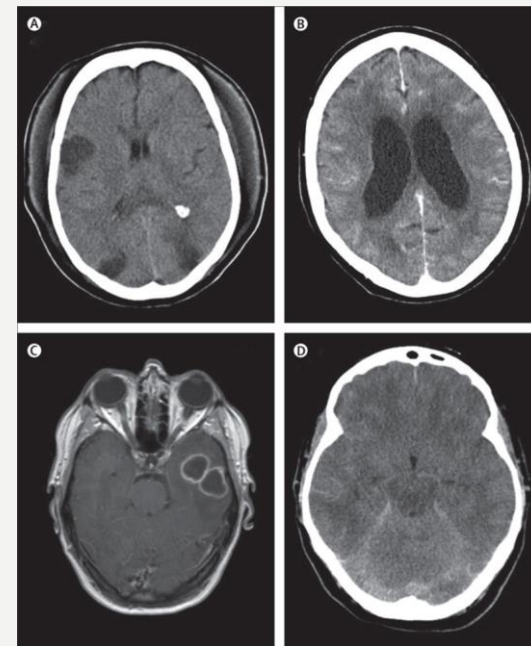


**WHAT DO YOU  
KNOW ABOUT  
HELLEN KELLER?**













# FLY INTO A RAGE



**2 Read the first part of the story of Helen Keller's life. Are the sentences true or false? Write T or F and correct the false sentences.**

- 1 As a baby, Helen had normal sight and hearing. \_\_\_\_
- 2 A relation of one of the family servants gradually taught Helen sign language. \_\_\_\_
- 3 Helen's mother was very unhappy and frequently got cross with her. \_\_\_\_
- 4 Anne Sullivan was partially blind. \_\_\_\_
- 5 The first word that Helen understood through finger-spelling was 'doll'. \_\_\_\_



# Silent darkness


4.16

Helen Keller was born in 1880 in Alabama, with the ability to both see and hear, like any normal child. She began to speak when she was six months old and to walk at the age of one. But six months later, she contracted a serious illness, possibly meningitis. After she had recovered, her mother noticed that Helen didn't react to sounds, or when she waved her hand in front of Helen's face. The illness had left her both deaf and blind.

As she grew up, she learned to communicate with the daughter of the family cook using sign language that they invented together. But Helen was an unhappy child and often flew into a rage. Her mother was very patient with her and tried to help her. She had read about the successful education of another deaf-blind child, and when Helen was seven she contacted a special school for blind children in Boston. The director of the school suggested that Helen work with Anne Sullivan, who was herself visually impaired and a recent graduate of the school. It was the beginning of a 49-year relationship between pupil and teacher.

Anne travelled to Helen's home and immediately began teaching her 'finger-spelling': spelling out words on the palm of Helen's hand. The first word she tried to teach her was 'doll' – Anne had brought Helen a doll as a present. But Helen could not make the connection between the letters and the objects and became very frustrated. After about a month, however, there was a breakthrough. Helen realised that the movements of Anne's fingers on her palm, while she poured water over her other hand, signified 'water'. By the end of the day Helen had learned thirty new words.



3  4.17 Listen to the second part of the story of Helen Keller's life. What is the significance of these numbers and dates?

a ten years


c 1904

e 81

b 1900

d 1936

f 1968

**4**  **4.17** Listen again. Answer the questions.

- 1 What took Helen 25 years of hard work to master?
- 2 Why didn't she study at Harvard?
- 3 What else did she do while she was at university?
- 4 What political and social causes did she support?
- 5 How old was Helen when she died?



**5** Write some short messages or sentences in English for your partner. Do not show him / her.

*Hello. How are you?*

**6** Work in pairs. Take turns to close your eyes while your partner spells out their messages on your palm using their finger. Can you understand?

.stxet eht ees elpoep cixelsyd woh syaw eht fo eno ylno si sihT

.stxet eht ees elpoep cixelsyd woh syaw eht fo eno ylno si sihT  
This is only one of the ways how dyslexic people see the texts.



**7 SPEAKING** Imagine you were deaf-blind. What practical and emotional problems would you face? Use the phrases below to help you.

One problem would be that ...

It would be difficult / impossible to ...

You'd have to ...

I would hate not being able to ...

**8 INTERNET RESEARCH** Find out about the life of another inspirational person who overcame disability or other difficulties. Make notes about:

- their name, nationality and background
- the disability or difficulties they overcame
- their achievements
- why you admire them

# DO YOU REMEMBER GUIDE DOGS FOR THE BLIND?







# **ASSIGNMENT: SUMMARY**

**DEADLINE: TUESDAY**